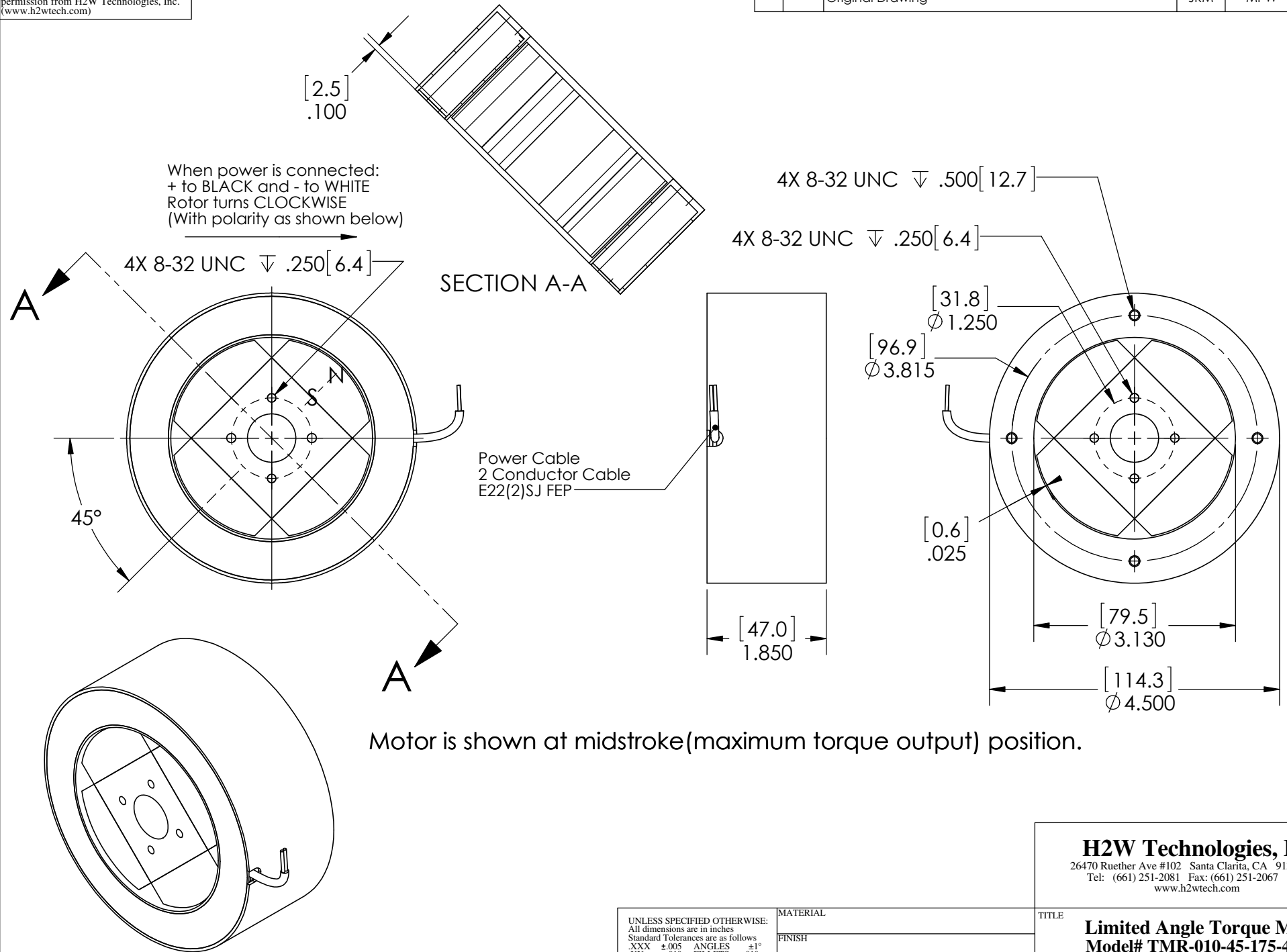


REVISION TABLE					
REV	ECN#	DESCRIPTION	REV BY	APPROVED	DATE
---	---	Original Drawing	JRM	MPW	02-25-14



UNLESS SPECIFIED OTHERWISE: All dimensions are in inches Standard Tolerances are as follows .XXX $\pm$ .005 ANGLES $\pm$ 1° .XX $\pm$ .010 FILLETS .010 .X $\pm$ .020 CORNERS .010 Remove All Burs and Sharp Edges				MATERIAL		TITLE	
				FINISH		Limited Angle Torque Motor Model# TMR-010-45-175-4-48V	
DRAWN	DATE	APPROVED	DATE	DWG #	REV	SHEET	
JRM	02-25-14	MPW	02-25-14	80-0271	---	1 of 2	

**H2W Technologies, Inc.**  
 26470 Ruether Ave #102 Santa Clarita, CA 91350 USA  
 Tel: (661) 251-2081 Fax: (661) 251-2067  
 www.h2wtech.com

LIMITED ANGLE TORQUE MOTOR SPECIFICATIONS		
Motor P/N	TMR-010-45-175-4-48V	
Device Type	MR	
Stroke	10 degrees	0.17 radians
Radial Clearance	0.025 in	0.64 mm
Housed with Bearings	No	
Rotor Inertia	61.2 oz-in <sup>2</sup>	1.12 E-3 kg-m <sup>2</sup>
Total Mass	6.3 lbs	2.86 kgs
Resistance @ 20C	7.8 ohms	
Inductance @ 20C	4.1 mH	
Electrical Time Constant	0.53 msec	
Motor Constant	50 in-oz/sqrt(watt)	35 N-cm/sqrt(watt)
Torque Constant	140 in-oz/amp	98 N-cm/amp
Back EMF	0.10 V/rpm	1.0 V/rad/sec
Torque @ 100% Duty	240 in-oz	168 N-cm
Power @ 100% Duty	24 watts	
Current @ 100% Duty	1.7 amps	
Torque @ 10% Duty	720 in-oz	503 N-cm
Power @ 10% Duty	207 watts	
Current @ 10% Duty	5.1 amps	

Note: The values in the table above are calculated for 20°C at Sea Level are for reference ONLY, actual values will be provided on test data sheet with shipment of actuators.

TITLE	<b>Limited Angle Torque Motor Model# TMR-010-45-175-4-48V</b>		
DWG #	<b>80-0271</b>	REV	---
		SHEET	2 of 2